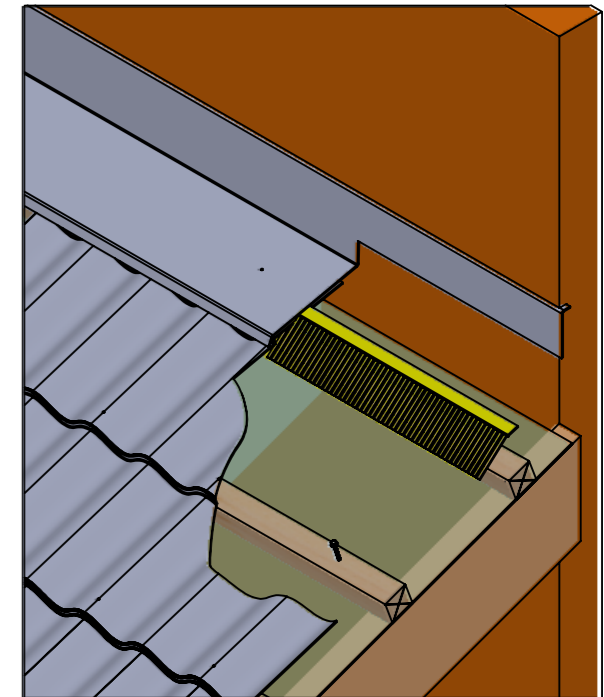
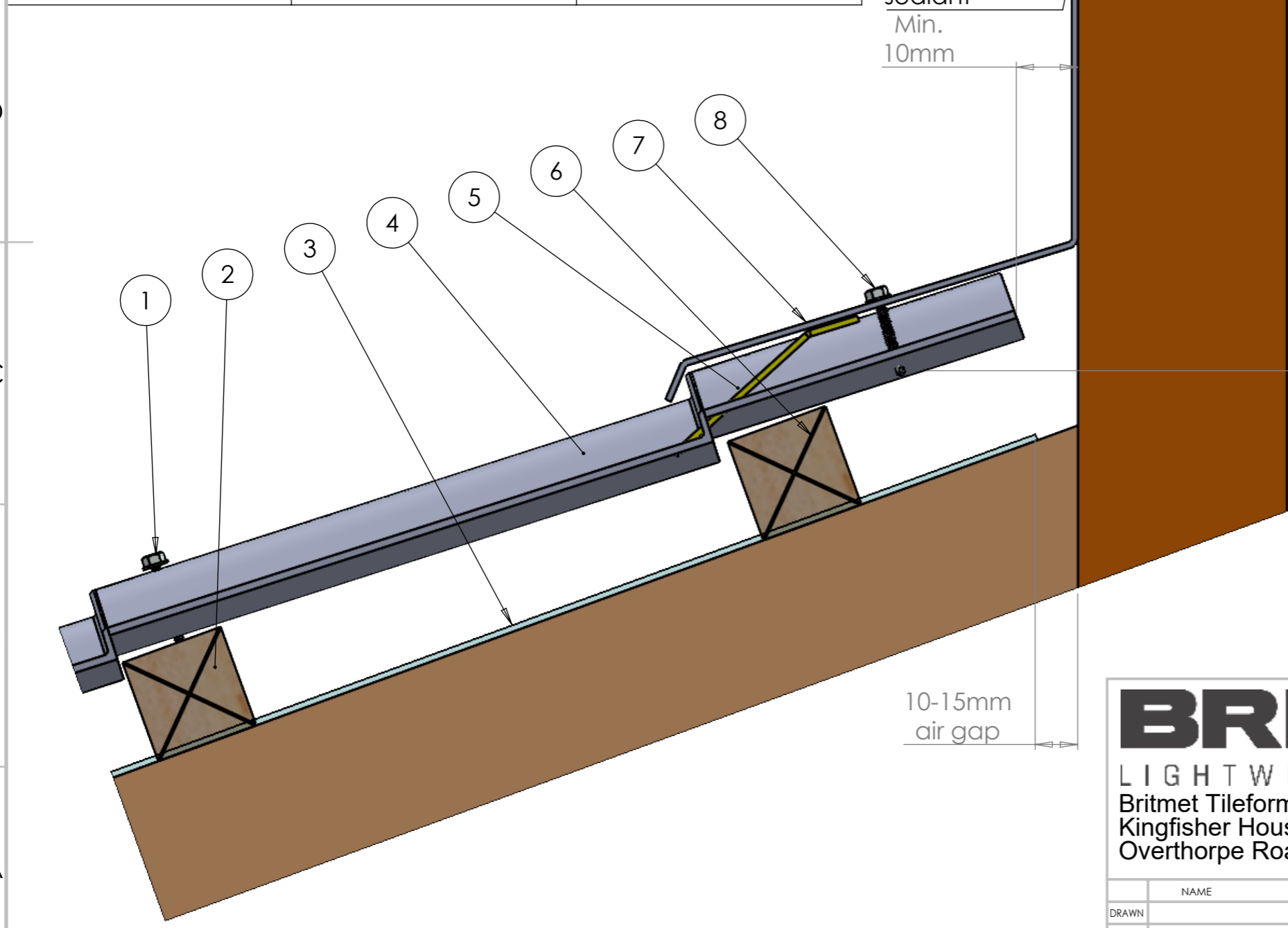


ITEM	DESCRIPTION	DETAIL
1	Main fixing	85mm
2	Sheet batten	50x50mm
3	Membrane	50x50mm
4	Pantile 2000	
5	Comb filler	
6	Abutment batten	50x50mm
7	Apron flashing	
8	Stitcher	35mm



BRITMET
 LIGHTWEIGHT ROOFING
 Britmet Tileform Ltd
 Kingfisher House, Unit 17
 Overthorpe Road, Banbury, OX16 4SX

NAME	DATE	MATERIAL:
DRAWN		
CHK'D		

DO NOT SCALE DRAWING	REVISION
TITLE: Pantile 2000 Top abutment detail.	
DWG NO. P2-TAbut-001-A	
SCALE:DNS	SHEET 1 OF 1

A3